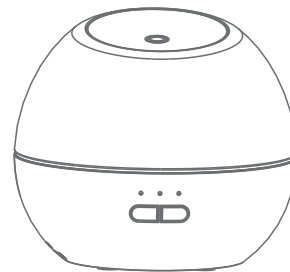


ITSU  
御手の物®



IS0148 user manual

AROMA DIFFUSER

# WARNING

This appliance can be used by children aged from 8 years and above and persons with reduced physical, sensory or mental capabilities or lack of experience and knowledge if they have been given supervision or instruction concerning use of the appliance in a safe way and understand the haz-

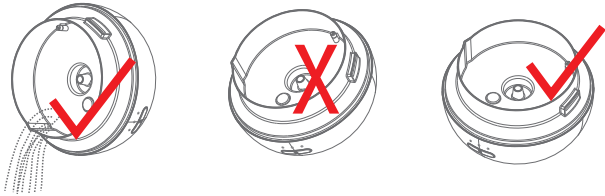
ards involved. Children shall not play with the appliance. Cleaning and user maintenance shall not be made by children without supervision.

It must only be supplied at safety extra low voltage corresponding to the marking on the appliance.

Unplug the appliance during filling and cleaning.

**Do not empty water from the side which air-vent located.**

**Do not lean the aroma diffuser during operation.**



## TABLE OF CONTENTS:

- A .FUNCTION
- B .SPECIFICATION
- C .INSTALLATION
- D .MAINTENANCE
- E .TROUBLESHOOTING



## FUNCTION

With innovative and unique design, this Aroma Diffuser combines the soul of both orient and western cultures with new fashion and modern science.

By breaking up the mixture of water and essential oil into millions of micro-particles, a stream of air entirely diffuses activated ingredients of blended essential oil, which could be easily absorbed by body and stay long in the room.

Under the richly enhanced effect as aromatherapy, your nerve would be eased gradually and your skin would be moisturized at the same time.



## SPECIFICATION

Product name: Aroma Diffuser

Product Size: ø147mmXH131mm

Input Voltage: 5.0V  $\overline{\text{---}}$  5.0W

Water Load: 150mL

- A.Top Cover
  - B.Base (Water Tank)
  - C. USB Line
1. Air-Vent
  2. Max water level line
  3. Ceramic disc
  4. Untime LED1
  5. 2 Hour LED2
  6. 4 Hour LED3

| Times Of Key Pressed | Left Button                    |           | Right Button |                        |
|----------------------|--------------------------------|-----------|--------------|------------------------|
|                      | Mist                           | Light     | Short Press  | Long press (>2 second) |
|                      |                                |           | Light Mode   | Timer Mode             |
| Once                 | Mist ON<br>LED1 ON<br>(untime) | Changing  | Color choose | 2 hour(LED2 ON)        |
| Twice                | POWER OFF                      | POWER OFF | Light OFF    | 4 hour(LED3 ON)        |
| Three times          |                                |           | Changing     | untime(LED1 ON)        |

# C

## INSTALLATION

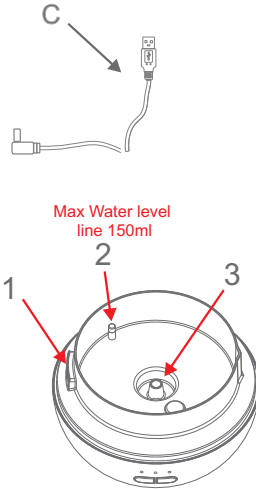
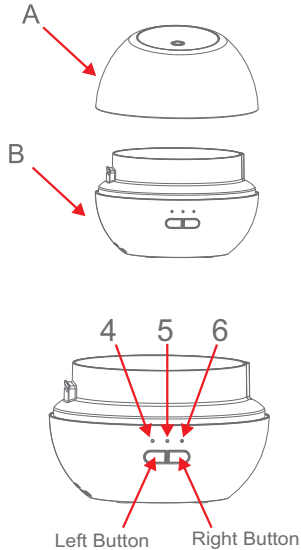
### Important Notes Before Use:

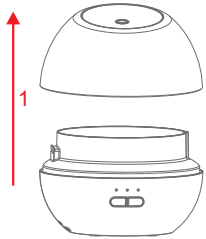
A. Place the unit on an even surface, It is suggested to put on tap water, pure water or mineral water in normal temperature (no demineralized water). Corrosive liquid is not suitable to this unit.

B. Fill water (150ml) into the water tank.

C. Water-soluble essential oil is recommended. Be careful, some essential oils are corrosive so they can affect your item. Please contact your local dealer for further information.

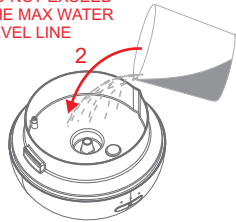
D. When the product is tripped during operation, liquid may then flow into the internal space of the unit. Unplug the power and empty all water, keep the unit standing still in a ventilated place for 3 days. If there is anything wrong when you reuse, contact your local dealer for help.



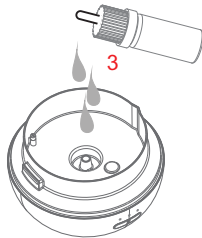


1. Take out all the cover.

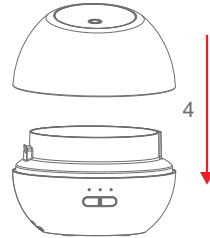
DO NOT EXCEED  
THE MAX WATER  
LEVEL LINE



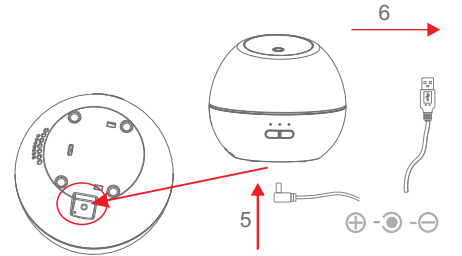
2. Fill water (Max. 150mL)  
into the water tank.



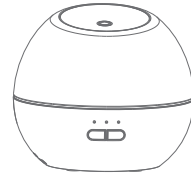
3. Add 2~3 drops of  
essential oil into  
the water



4. Put back the cover



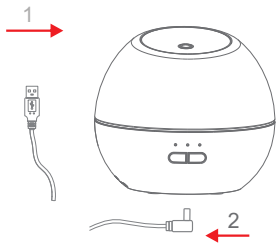
5-6. Plug the adapter and press  
the power button



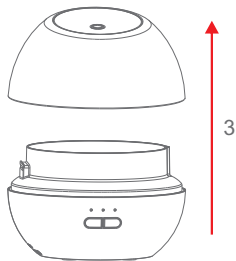
7. Press the power button and enjoy.

# D

## MAINTENANCE



1-2. Power off the unit and then pull out the plug

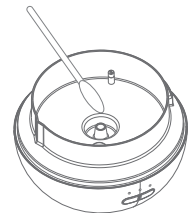


3. Twist the cover and take it out.



4. Empty water from the back side and avoid water flowing into the air-vent.

5. Use a clean swab or cloth to clean the unit (At least once per 3 days is suggested).



6. Keep it clean and dry if you don't use it for long time.



## TROUBLESHOOTING

| Symptom        | POSSIBLE CAUSE  | SOLUTION   |
|----------------|---|--|
| <b>No Mist</b> | The power lead is not connected.                            | Plug the adapter into an electric socket and turn the power switch on. |
|                | There is not enough water.                                  | Pour a sufficient quantity of water in.                                |
|                | There is too much water (more than 150 ml).                 | Take out excess water.   |
|                | The lid is obstructed by water droplets or other particles. | Clean the obstruction with a cotton bud and leave the area ventilated. |

## Contact Us



ITSU World Sdn Bhd  
13 Lorong Teknologi B, Nouvelle Industry Park,  
Taman Sains SG1 Kota Damansara, PJU 5,  
47810 Petaling Jaya  
Malaysia  
Tel: +603 67323722



ITSU World(HK) Limited  
Workshop D1,28/F, TML Tower  
No. 3 Hoi Shing Road, Tsuen Wan, N.T.  
Tel: +852 3611 2228



PT Healthy World  
Lodan Center Block O No 20  
Jalan Lodan Raya No 2  
Jakarta Utara 14430  
Tel: +62 21-6983 1123



# 警告

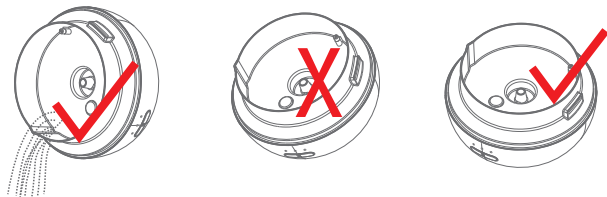
本產品可用于8歲以上的兒童以及受過安全使用方面的監督或指導，并了解所涉及的危險的那些感官或精神能力較弱或缺乏經驗和知識的人員。兒童不得玩耍本產品。

兒童不得在沒有監督的情況下進行清潔和用戶維護。

只能以與設備標記相對應的安全超低電壓供電。

在填充和清潔過程中，請拔下設備電源。

請勿從出風口所在的一側倒水。  
在操作過程中，請勿傾斜香氣擴散器。



# 產品目錄

- A .產品功能
- B .產品規格
- C .操作方式
- D .維護保養
- E .疑難排解



## 產品功能

這款香薰機採用創新和獨特的設計，將東方和西方文化的靈魂與新時尚和現代科學融為一體。

通過將水和香精油的混合物分解成數百萬個微粒，空氣流會完全擴散混合香精油的活性成分，這些成分很容易被人體吸收并在室內停留很長時間。

在如芳香療法這樣的豐富增強效果下，您的神經將逐漸被舒緩，同時皮膚將被保濕。

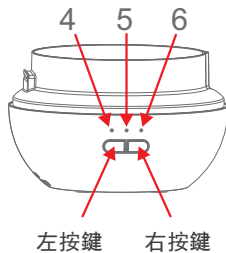
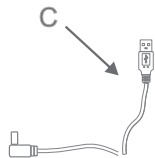
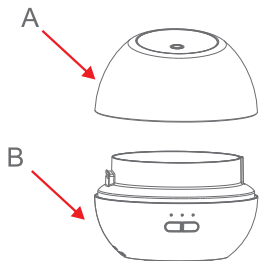


## 產品規格

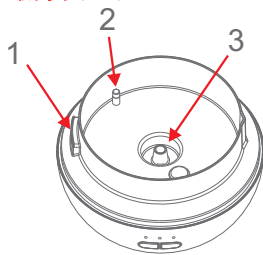
商品名稱: 超聲波香氣擴散器  
商品尺寸:  $\phi 147\text{mm} \times \text{H}131\text{mm}$   
輸入電壓:  $5.0\text{V} \text{ --- } 5.0\text{W}$   
水箱容量: 150ml

- A. 上蓋
- B. 底座(水箱)
- C. USB線
- 1. 出風口
  - 2. 最高水位線
  - 3. 霧化片
  - 4. 常規沒定時 LED1
  - 5. 2小時定時 LED2
  - 6. 4小時定時 LED3

|      | 左按鍵                      |      | 右按鍵        |                  |
|------|--------------------------|------|------------|------------------|
|      | 霧                        | 燈光   | 短按<br>燈光模式 | 長按(大于2秒)<br>定時模式 |
| 按第一次 | 噴霧模式<br>LED1 ON<br>(沒定時) | 燈光漸變 | 定色         | 2小時(LED2 ON)     |
| 按第二次 | 關機                       | 關機   | 關燈         | 4小時(LED3 ON)     |
| 按第三次 |                          |      | 漸變         | 沒定時(LED1 ON)     |



最高水位線150ml

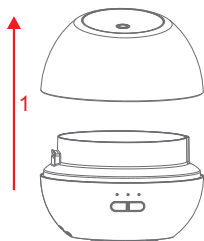




## 操作方式

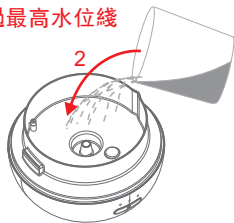
### 使用前注意事項:

- A. 將本機放置在平坦的表面上，建議加入常溫下的自來水，純淨水或礦泉水。禁止使用任何腐蝕性的液體。
- B. 往水箱加入最多150ml的水。
- C. 建議使用水溶性精油或者純精油。
- D. 在使用過程中如將產品傾斜，可能會使液體流進主機內，請將電源斷開後將水倒掉，並水平放置產品，擺放在通風處3天左右。如果在下一次使用時發現還有問題，請與當地經銷商聯繫。

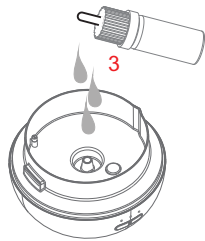


1. 取出上蓋。

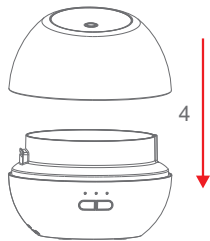
請別超過最高水位線



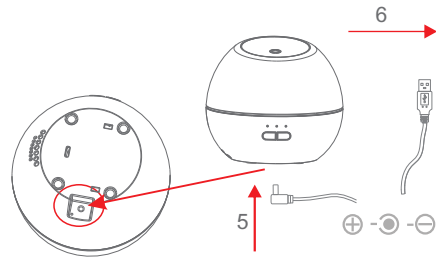
2. 往水箱加入最多150ml水。



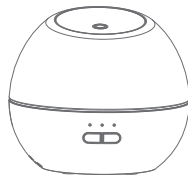
3.往水箱里加入3-5滴精油



4.放回并蓋好上蓋



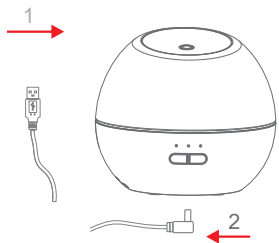
5-6.插入USB綫



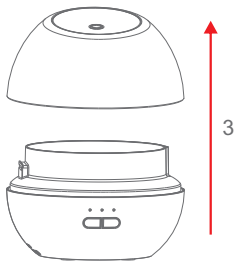
7.機器啟動

# D

## 維護保養



1-2. 關掉機器并拔掉USB綫

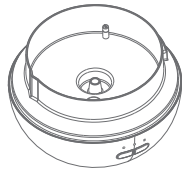


3. 取出上蓋

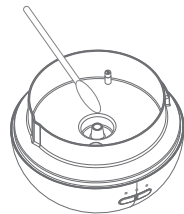


4. 將水倒出，并避免水流進出風口

5. 使用乾淨的棉棒或擦布清洗乾淨水箱。（最少三天清理一次）



6. 如果長時間不使用機器，請保持干淨和干燥。





## 疑難排解

| 故障  | 故障的原因          | 處理方法                   |
|-----|----------------|------------------------|
| 沒噴霧 | USB線沒連接上       | 把USB线接上, 并打<br>开机器电源开关 |
|     | 水箱內的水不夠        | 往水箱內假如適量的水             |
|     | 水太多 ( 超過150ml) | 將多出的水倒出                |
|     | 上蓋被水或是其他雜物阻塞   | 用棉棒清理乾淨並<br>確保出霧口乾淨.   |

## 聯系我們



ITSU World Sdn Bhd  
13 Lorong Teknologi B. Nouvelle Industry Park.  
Taman Sains SG1 Kota Damansara. PJU 5.  
47810 Petaling Jaya  
Malaysia  
Tel: +603 67323722



ITSU World(HK) Limited  
Workshop D1,28/F. TML Tower  
No. 3 Hoi Shing Road, Tsuen Wan, N.T.  
Tel: +852 3611 2228



PT Healthy World  
Lodan Center Block O No 20  
Jalan Lodan Raya No 2  
Jakarta Utara 14430  
Tel: +62 21-6983 1123